

Macquarie River Trails



Heritage



Nature



River



Produce



Cycle



Art



Fishing

Relax Recover Unwind Discover

2nd edition December 2012



www.rivertrails.com.au

Macquarie River Trails has been made possible by the support of many organisations and businesses; too many to list them all here. Details are available on www.rivertrails.com.au.

This publication has been made possible with the financial support and sponsorship of the following:

Gold sponsors



Silver sponsors



Bronze sponsors



**Warren
Chamber of
Commerce**



The not-for-profit organisation Riversmart Australia Ltd provides coordination and overall administration of the initiative.
Visit www.riversmart.org.au for further information.



Thanks to the Central West CMA for their ongoing support for the Macquarie Riversmart initiative.



Use this quick code to find our website www.rivertrails.com.au or you can also follow us on Facebook.

Download the app today

Design and typesetting: Sprout Design
Cover main photograph: Lisa Minner
Other photo credits: see page 71



Heritage



Nature



River



Produce



Cycle



Art



Fishing

Relax Recover Unwind Discover

The Macquarie valley in the heart of New South Wales is one of the State's – and indeed Australia's – best kept secrets, until now. The Macquarie River Trails are designed to let you explore the many attractions and treasures of this rich farming region, one that is blessed with a wonderful, vibrant river, friendly people and a laid back lifestyle.

This is your chance to 'Relax, Recover, Unwind and Discover'. Seven trails for you to pick and choose from to create a lifetime of memories as you meander through our region – let the river be your tour guide. From the wonders of Lake Burrendong to the frontier country of the Macquarie Marshes if you only spend a week, you'll probably have to come back. But that's Ok, you're welcome anytime.

Macquarie River Trails



Heritage

Nature

River

Produce

Cycle

Art

Fishing

Relax Recover Unwind Discover



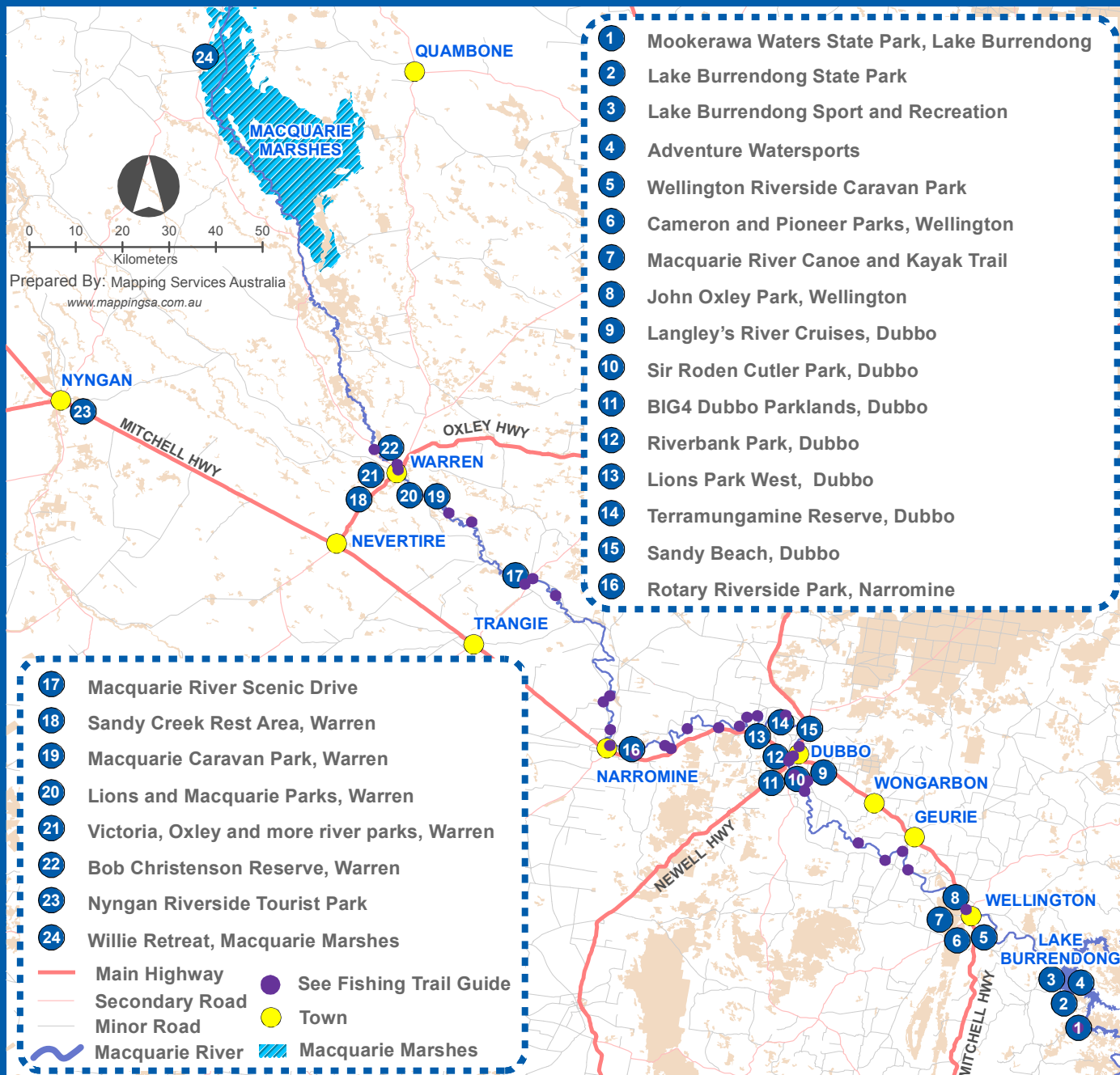
MACQUARIE RIVER TRAILS CONTENTS

River	5-16	 River
Heritage	17-23	 Heritage
Art	24-31	 Art
Nature	32-42	 Nature
Produce	43-52	 Produce
Cycle	53-60	 Cycle
River Bedz	61-67	 River Bedz
Attraction Coordinates	68-71	
Map - Wellington	72	
Map - Dubbo	74	
Map - Narromine	76	
Map - Warren	78	

RIVER TRAIL

Excluded from this listing are those River trail sites that lie outside the urban areas. These are provided as part of the **Macquarie River Fishing Trail Guide** – see www.rivertrails.com.au for details.

Map reference number	Attraction	page
	River Trail Map See also town inset maps on pages 72-79	6
1	Mookerawa Waters State Park, Lake Burrendong	8
2	Lake Burrendong State Park	8
3	Lake Burrendong Sport and Recreation Centre	8
4	Adventure Watersports	9
8	John Oxley Park, Wellington	9
6	Cameron and Pioneer Parks, Wellington	9
7	Macquarie river canoe and kayak trail	10
5	Wellington Riverside Caravan Park	10
11	BIG4 Dubbo Parklands	10
10	Sir Roden Cutler Park, Dubbo	11
12	Riverbank Park, Dubbo	11
13	Lions Park West, Dubbo	11
9	Langley's River Cruises, Dubbo	12
15	Sandy Beach, Dubbo	12
14	Terramungamine Reserve, Dubbo	12
17	Macquarie River scenic drive	13
16	Rotary Riverside Park, Narromine	13
19	Macquarie Caravan Park, Warren	14
18	Sandy Creek Rest Area, Warren	14
22	Bob Christenson Reserve, Warren	14
20	Lions and Macquarie Parks, Warren	15
21	Victoria, Oxley and more river parks, Warren	15
23	Nyngan Riverside Tourist Park	16
24	Willie Retreat, Macquarie Marshes	16





Lake Burrendong State Park 2

Lake Burrendong State Park offers year-round attractions for fishing enthusiasts, nature lovers, bushwalkers, campers and picnickers.

Location: Lake Burrendong State Park is only one

hour drive from either Dubbo or Orange and five hours from Sydney. If you are coming from the north of the state, the park is 27km south-east of Wellington.

T: (02) 6846 7435 **W:** www.stateparks.nsw.gov.au/lake_burrendong



Lake Burrendong Sport and Recreation Centre 3

Lots of lake activities here – canoeing, kayaking and dragon boating for groups. Self contained accommodation for people to bring their own vessels.

Location: Lake Burrendong Sport and Recreation is

only one hour drive from either Dubbo or Orange and five hours from Sydney. If you are coming from the north of the state, the park is 27km south-east of Wellington.

T: (02) 6846 7403. Prearranged visits only – please telephone first.

W: www.dsr.nsw.gov.au



Mookerawa Waters State Park, Lake Burrendong 1

Mookerawa Waters is also part of the Lake Burrendong State Park but it is approximately 15kms to the south. Park facilities include a kiosk,

picnic areas, more than 200 camping areas (no powered sites available), boat ramps and barbecue facilities. Mookerawa Waters Park is great for fishing, swimming, skiing and boating. For the avid bushwalker there are many walks available from easy to the more difficult. There's even a simple golf course.

Location: The closest town to Mookerawa Waters Park is Stuart Town, a small former gold rush town of approximately 300 people. The town used to be called Ironbark which Banjo Paterson made famous in his poem "The Man From Ironbark". Mookerawa Waters is approximately 10kms from Stuart town.

Hours: Accessible at all times, however a pin number is required for entry. These can be obtained during office hours 9am–5pm.

T: Mookerawa kiosk: (02) 6846 8268 Lake Burrendong State Park: (02) 6846 7435

W: www.stateparks.nsw.gov.au/lake_burrendong



Burrendong Botanic Garden and Arboretum *see page 36 Nature Trail*

Adventure Watersports 4

Learn to waterski or wakeboard, kneeboard or ride the big green tube. They offer half or full day sessions with fully accredited and insured drivers and instructors plus lessons for adults and kids, with discounts for larger groups.

Location: Primarily at Lake Burrendong on weekends. Bookings are essential. Week day bookings are available for large group bookings with a minimum two weeks notice. See website or contact us for details of costs etc.

T: 0419 774 906 **E:** fun@adventurewatersports.co or find us on facebook

W: www.adventurewatersports.co/



John Oxley Park, Wellington 8

Riverside stop-off where the Bell River joins the Macquarie, right in Wellington. An area known for its platypus sightings. There is also a boat ramp here.

Ideal location for fishing or taking a paddle – upstream is best! Beware – downstream a few hundred metres the river divides around some willows and can be dangerous even for experienced paddlers. No camping allowed here.

Location: If coming from Molong–Orange direction follow the Mitchell



Highway through town toward Dubbo, but turn left into Gobolion Street just before the bridge crosses the Macquarie river. Follow this down until you go over the low-level bridge and the Park is on your left. From Dubbo direction – cross the main bridge and turn immediately right into Gobolion Street – then proceed to the low-level bridge etc.

Cameron and Pioneer Parks, Wellington 6

These two adjoining parks, on either side of the Bell River, are located in the heart of Wellington. Both are ideal locations for a rest, in the tranquil riverside setting. Cameron Park also includes the Wellington Visitor Information Centre and has a playground for the children and beautifully maintained gardens.

There are lots of park benches and places to picnic. Cameron Park joins Pioneer Park via a suspension footbridge and this is also renowned as a good area for



platypus spotting (see Nature Trail). Both areas have toilets and in Pioneer Park there is a bar-b-que and a playing field.

Location: Right in the middle of town – look for the Visitor Information Centre. Pioneer Park is on the opposite side of the river.

Macquarie river canoe and kayak trail 7

Documented by the NSW Department of Lands in 2009 and described as follows on their web site (see link below). "Starting at Wellington, the six day Macquarie River Canoe Trail travels 150 kms to Narromine and winds its way through areas lined with huge old river red gums, providing habitat for a vast range of birds and animals with some being quite rare or unique to the area. Good water flows from the Burrendong Dam provide excellent conditions during the summer months, and riverside reserves provide easy river access and relaxing camping spots." How to go about this activity: This is a self-guided trail. You can download the detailed planning guide — see link below. Ideal starting locations are the Riverside Caravan



Park or the Bridge Motel in Wellington (see River bedz). You will need to bring your own canoe, etc. Hiring is not an option at present.

W: www.lpma.nsw.gov.au/about_recreation/canoe_and_kayak_trails



Wellington Riverside Caravan Park 5 *see page 64 River bedz*



BIG4 Dubbo Parklands 11 *see page 65 River bedz*

Community group supporters of Macquarie River Trails

WomDomNom

The group organises a four-day paddle down the fantastic Macquarie river each year from Wellington to Narromine, on the weekend closest to the 1st of December. They also have regular group paddles along different parts of the river.

E: contact@womdomnom.com **W:** www.womdomnom.com



Sir Roden Cutler Park, Dubbo 10

A great place for a picnic and bar-b-ques are provided. Right in the heart of Dubbo with the entrance opposite the Abel Tasman Motor Inn. There are two areas, one right near the Newell Highway turnoff and the other down beside the river itself. There are toilets, barbecues and rubbish bins. No camping allowed. Viewing platform looks across the river to Sandy Beach (see below). The Tracker Riley Cycle and Walking trail runs through this park. It's only a few kilometres



from Taronga Western Plains Zoo and sits behind Dubbo BIG4 Parklands.

Location: Right in the heart of Dubbo with the entrance opposite the Abel Tasman Motor Inn on the Mitchell Highway which takes you out to Taronga Western Plains Zoo.

W: www.dubbo.com.au

Riverbank Park, Dubbo 12

A great area for a picnic or stroll along the river right in the middle of Dubbo. These parklands extend from behind the main shopping area (parallel with Macquarie street) upstream to Sandy Beach. The Visitor Information Centre is found near here also. Running through the park is the Tracker Riley Cycleway and Walking Trail which allows you to do about a 13 km loop that runs along



both sides of the river. There is also an outdoor exercise area, several playing fields, toilets, a boat ramp and pontoon.

Location: Riverbank Park can be found running parallel to Macquarie Street, the main street of Dubbo.

Lions Park West, Dubbo 13

Another great area for a picnic, bar-b-que or stroll along the river in Dubbo. These parklands are on the opposite side of the river to the main shopping area and Riverbank Park. Running through the park is the Tracker Riley Cycleway and Walking trail which allows you to do a 13km loop that run along that runs along both sides of the river. There are also toilets, easy parking with large turn-around area, a children's playground, easy access boat ramp and great views down onto the river.

Location: Opposite Riverbank Park — which runs parallel to Macquarie Street, the main street of Dubbo. The boat ramp lies more or less under the main (LH Ford) bridge crossing the Macquarie. Look for the Tallarook Motel right near the round-



about beside the bridge — the park is right in front of it. Alternatively, take Stonehaven Crescent off the Newell Highway — which runs between the Council Caravan Park and the Cattlemen's Motel — opposite fast food alley!

Langley's River Cruises, Dubbo 9



Offering tranquil cruises on the Macquarie river in Dubbo for special occasions and events, bird watching, relaxation etc. Seats up to 20 in covered seating.

Hours: Negotiated as part of request for booking

T: (02) 6882 8977

E: contact@langleyscoaches.com.au

W: www.langleyscoaches.com.au

Sandy Beach, Dubbo 15

A great place for a picnic, swimming, fishing and canoeing right in Dubbo. Parking for vans and lots of turning space. Toilets, barbeques and rubbish bins. Access to the river is good as the beach is shallow and with gravel. There is no concrete boat ramp (but there are two further down the river – see the Riverbank Park and Lions Park West). The Tracker Riley Cycleway and Walking trail passes through this reserve. No camping allowed.

Location: If coming from Wellington direction along the Mitchell Highway turn left at the lights just before the LH Ford Bridge and then take the first right into Bligh street. Follow this road a short distance until it veers to the right,



where you take the left hand turn and follow this road to Sandy Beach. Otherwise, if you're in the main shopping area, turnoff Macquarie street toward the river, and then follow Bligh street under the Ford bridge until you see Sandy Beach Road on your right.

W: www.dubbo.com.au

Terramungamine Reserve, Dubbo 14

Camping, fishing, boating and Aboriginal grinding grooves with a viewing platform over the Macquarie River. There is a sealed road to the entry gate. The roads in the Reserve are not sealed in some areas. Access good for caravans. Camping allowed but only for one night. There are toilets and bar-b-que areas, plus some tables and seating benches. Stone steps down to the river



but no boat ramp. **Location:** Take the Newell Highway toward Gilgandra and a few kilometres from Dubbo, as you pass through Brocklehurst there is a turn to the left. Follow this for about 3-4 kilometres to the turn-off left into the Reserve.

W: www.dubbo.nsw.gov.au/RecreationandCulture/RuralReserves



Macquarie River scenic drive 17

Get off the highway and take the scenic route from Warren to Narromine or vice versa. This sealed road runs along the northern side of the

Macquarie. You get regular views of the mostly steep-sided river, and there are even some places to stop and relax, and maybe drop a line in the river – see the Fishing Trail guide for how to find these.

Location: From Warren, near the bridge over the river, take Milson Street which becomes Wambianna Road and follow it until it reaches a T-intersection (the Collie-Trangie Road) – turn left and then in less than a kilometre turn right into Burroway West Road – which will take you to Narromine. If coming from Narromine follow the signs to Gilgandra and just out of town, after you cross the Macquarie, take the left hand turn into Burroway Road.

Rotary Riverside Park, Narromine 16

Absolute river frontage parklands with a great, sealed boat ramp. The reserve also has children's playgrounds, toilets, bar-b-ques, picnic tables, garbage bins and lots of room for stretching the legs on the vast well-cared for grassed areas. Camping is not permitted. Water skiing is allowed on the river and there are numerous good fishing spots. Narromine is famous for its sportstars such as Glenn McGarth (see the statue of him when in town), Melinda Gainsford-Taylor, David Gillespie and lots more.



Location: Proceed down Dandaloo Street (the main one) toward Warren, Trangie etc, and turn right into Culling Street before the highway sweeps around to the left on the edge of town.

W: www.narromine.nsw.gov.au

Narromine United Services Memorial Club Limited



Stay for lunch ... at our Midday Bistro
or dinner at our Flightdeck Restaurant.

Open 7 days for lunch and dinner

Enjoy the relaxed atmosphere

Telephone (02) 6889 4288

Fax (02) 6889 4408

DANDALOO STREET, NARROMINE

Macquarie Caravan Park, Warren **19** *see page 67 River bedz*

Sandy Creek Rest Area, Warren **18**

This is a very convenient rest area just off the highway a few kilometres out of Warren on the road from Nevertire. At this point Sandy Creek is about 7kms – as the crow flies – from the Macquarie river, the closest point being in Warren. The rest area has picnic tables, and big turn-around area and lots of shade by the creek.

Location: Approximately 7 kms from Warren.



Bob Christenson Reserve, Warren **20**

Right on the river and with a boat ramp too. Free parking for up to 96 hours for self-contained motorhomes, campervans and caravans only. Public dump point and potable water are located at Oxley Park in Warren a short distance away – look for the big water tower.

Location: Follow the Oxley Highway out of Warren toward Gilgandra and take the first turn to the left after the Tiger Bay wetlands on the edge of town.



Follow this until you cross the river. The entrance into Christenson Reserve is on your left shortly after you cross the bridge. The reserve adjoins Brian Egan Weir – see Fishing Trail Guide – and note the safety warnings about any activities near the weir.

Community supporters of Macquarie River Trails: Inland Waterways Rejuvenation Association – bronze sponsor

The IWRA is Dubbo-based and promotes sustainable fishing, fund-raises for fish re-stocking and improving habitat along the river as well as organising the Lake Burrendong Classic Catch and Release Fishing Competition at Easter which in 2012 attracted over 1,000 entrants. **W:** www.iwra.com.au



Lions and Macquarie Parks, Warren **20**

Great places for a picnic and for the kids to play. These two well maintained areas are by the Macquarie river on the side of the main shopping area and are ideal stop-over places, although camping is not permitted. **Locations:** Lions Park is on the corner of Dubbo and Boston Streets, one block down from the main shopping area. It has a children's playground, covered tables and seats and rubbish bins. There is also the chance to walk along the levee bank beside the river.



Macquarie Park can be found where the Oxley Highway crosses the Macquarie river. It sits behind the Bowling Club. It also has picnic tables and a playground for kids. Worth seeing is the massive hollow stump of an old River Red Gum. The tree toppled over in 1998 and is estimated to have been about 950 years old at the time (see photo).

Victoria, Oxley and more river parks, Warren **21**

Like those on the other side of the river in Warren these are also great places for a picnic and for the kids to play. Some have off leash areas for dogs too (see signs indicating this). There are four areas, on this side of the river, all are very close or adjoining. **Location:** Victoria Oval and Park is the local sporting complex, which also runs beside the river. Adjoining it is Oxley Park where there are toilets, an RV dump site, plus covered picnic tables and bins for rubbish. On the other side of the Oxley Highway, but still on the same side of the river, is Ebert Park, a long narrow



park (this is Coonamble Road) where dogs are allowed to be off leash. Opposite this Park, Orchard Street joins Coonamble Road and few hundred metres down this is another long, narrow park, Orchard Street Park. Dogs are also permitted off-leash here and there are picnic seats etc.

Community supporters of Macquarie River Trails: Outback Dragons Dubbo

This club can be seen paddling on the Macquarie River in Dubbo most weeks, leaving from their HQ at Sandy Beach. They organise fun events such as corporate challenges and are always



keen to have people come along to try out this rapidly growing sport and leisure activity. **W:** www.oranadragonboat.com



Willie Retreat, Macquarie Marshes **24** *see page 67 River Bedz*



Nyngan Riverside Tourist Park **23** *see page 67 River Bedz*

Make sure you get a copy of the Fishing Trail Guide too

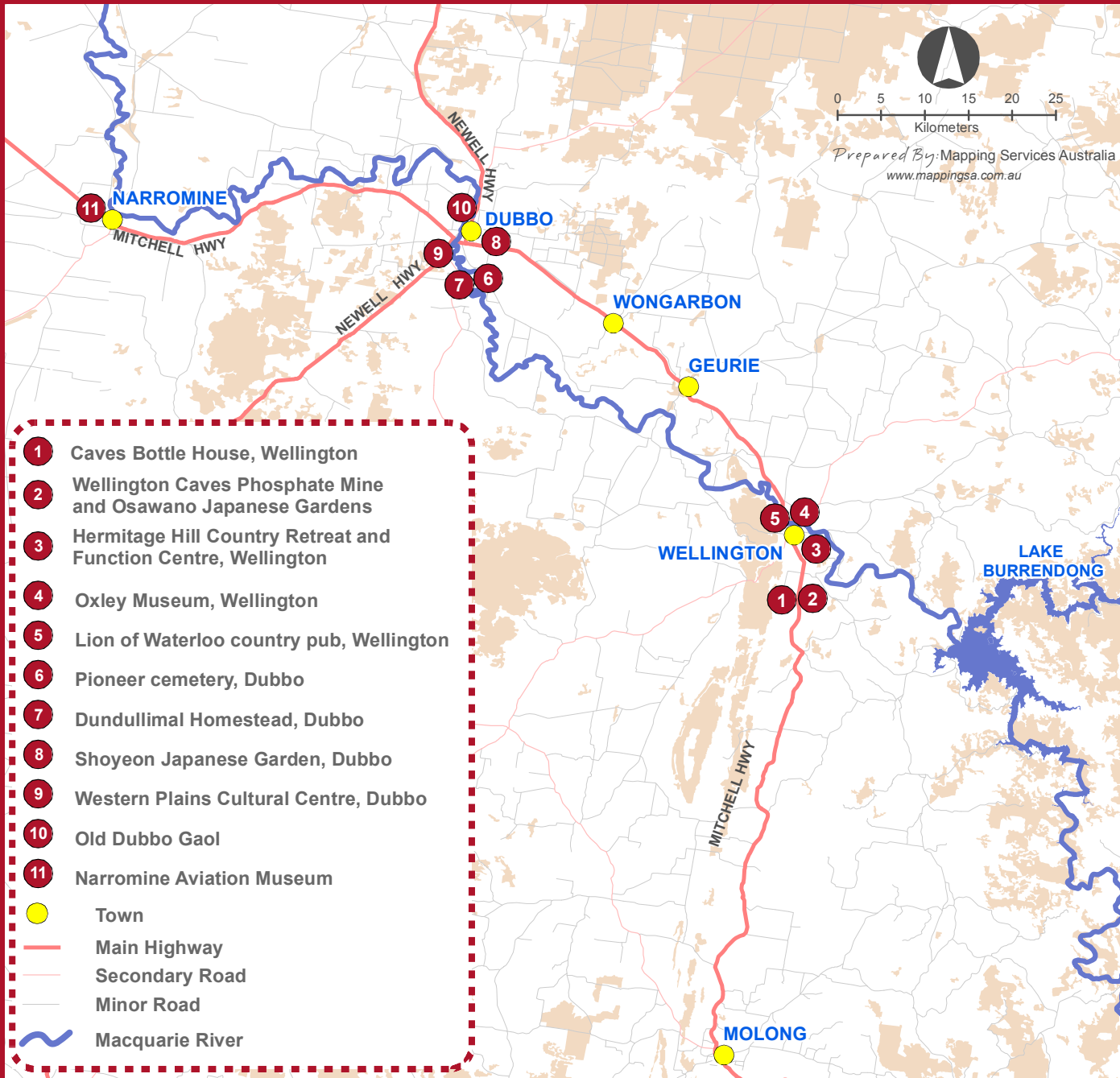


HERITAGE TRAIL

Map reference number	Attraction	page
	Heritage Trail Map <i>See also town inset maps on pages 72-79</i>	18
1	Caves Bottle House, Wellington Caves	20
2	Wellington Caves, Phosphate Mine and Osawano Japanese Gardens	20
3	Hermitage Hill Country Retreat and Function Centre, Wellington	20
5	Lion of Waterloo historic country pub, Wellington	21
4	Oxley Museum, Wellington	21
7	Dundullimal Homestead, Dubbo	21
6	Pioneer cemetery, Dubbo	22
9	Western Plains Cultural Centre, Dubbo	22
10	Old Dubbo Gaol	22
8	Shoyeon Japanese Garden, Dubbo	23
11	Narromine Aviation Museum	23



Heritage Trail



Caves Bottle House, Wellington Caves 1

The Bottle House is made from just over 9000 wine bottles. It's a fascinating place to see and is located near the entrance to the Wellington Caves and Phosphate Mine. The Bottle House is open during school holidays and on weekends. The Bottle House has for sale an interesting range of mineral specimens, crystals and fossils. A specialty of the shop is "Wellington Moonbeam Pendants", made on the premises from high quality, specially imported crystal.

Location: Take the Wellington Caves turnoff a few kilometres from Wellington on the Molong—Orange Road.

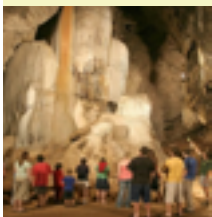
Hours: 10am—4pm Sunday or by appointment

T: (02) 6845 4294



Wellington Caves, Phosphate Mine and Osawano Japanese Gardens 2

The complex comprises two show caves; The Cathedral Cave and the Gaden Cave plus a series of smaller caves. These include the recently rediscovered Water Cave and the challenging River Cave, which are open to only the most experienced cave diving enthusiasts. While you're visiting the Caves, why not check out the Phosphate Mine and Wellington—Osawano Japanese Garden too.



Enjoy a snack, a coffee or an ice-cream at the Caves Kiosk. The Kiosk also sells a wide range of souvenirs.

Location: Take the Wellington Caves turnoff a few kilometres from Wellington on the Molong—Orange Road. **T:** (02) 6845 1418 for tour times, prices and group or school bookings

W: www.visitwellington.com.au



Hermitage Hill Country Retreat and Function Centre, Wellington 3

see page 64 River Bedz

Lion of Waterloo historic country pub, Wellington 5

This classic country pub dates back to 1841 to the days of Cobb & Co. Today the Lion of Waterloo remains a charming tavern with modern food. It can also cater for functions and has a quiet beer garden, and in winter, an open fire near the bar to keep warm by as you enjoy the atmosphere.



Location: Follow the signs off the highway . . . the tavern is on Montefiores Street — the turnoff is just near the highway bridge crossing the Macquarie river in the heart of Wellington.

Hours: Open 4pm to close seven days. Meals from 6pm each day.

T: (02) 6845 3636

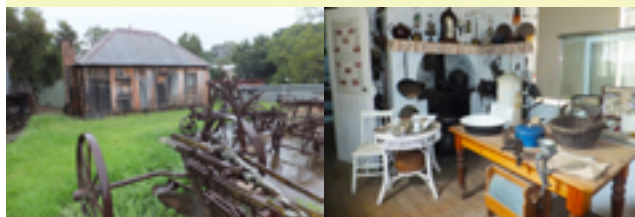
Oxley Museum, Wellington 4

Extensive collection of Wellington memorabilia, historic documents and displays (located in the original Bank of NSW building circa 1833), guided tours and family history research.

Location: Corner of Warne and Percy Streets, Wellington.

Hours: Mon—Fri 1.30pm—4.30pm (depending on availability of volunteers).

T: (02) 6845 2325 BH or (02) 6845 3562 AH



Dundullimal Homestead, Dubbo 7

On offer here are tours of this historic National Trust homestead and a café serving light lunches and Devonshire teas. We specialise in group tours, educational tours, functions and weddings.



Location: Obley Road, Dubbo, 1.5km past Taronga Western Plains Zoo entrance.

Hours: Tuesday—Friday 12pm—4pm; Saturday 11am—2pm. Other times by appointment.

T: (02) 6884 9984

E: dundullimal@nationaltrust.com.au

W: www.nationaltrust.com.au

Entry fees apply.

Pioneer cemetery, Dubbo 6

Cemetery where several of the early settlers to the region are buried.

Location: Take the Old Dubbo Road and about 3–4 kilometres from Dubbo, at the Lazy River Estate turn right into Butler's Falls Road, and then a few hundred metres further on turn right again – follow the signs to Pioneer Cemetery and Pilcher's Reserve.

Hours: Access to the Reserve restricted after dark.



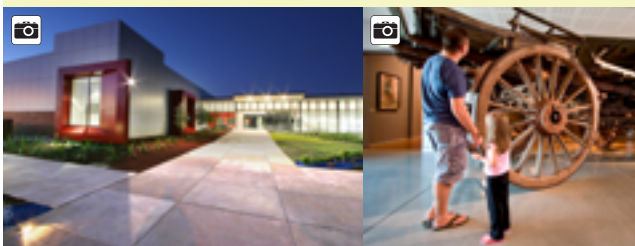
Western Plains Cultural Centre, Dubbo 9

Museum, exhibition space, function rooms, gallery and café.

Location: 76 Wingewarra Street, Dubbo

Hours: Wednesday–Monday 10am–4pm

T: (02) 6801 4449 bookings: (02) 6801 4444 **W:** www.wpcddubbo.org.au



Old Dubbo Gaol 10

The Old Dubbo Gaol was a courthouse lockup in 1847 and was proclaimed an official Gaol in 1859. It closed operations as a penal institution in 1966. Officially re-opened as a tourist attraction in 1974, the Old Dubbo Gaol is now fully restored and is home to a large display of animatronic models and holographic displays which provide a realistic and fascinating insight into a bygone era of barbaric prison life.

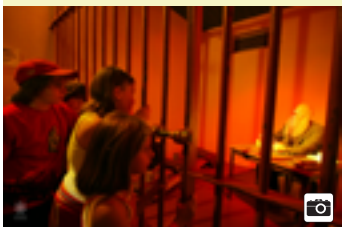
Location: Off Macquarie Street in Dubbo.

Hours: 9am–4pm every day except Christmas Day.

T: (02) 6801 4460

E: odg@dubbo.nsw.gov.au

W: www.olddubbogaol.com.au



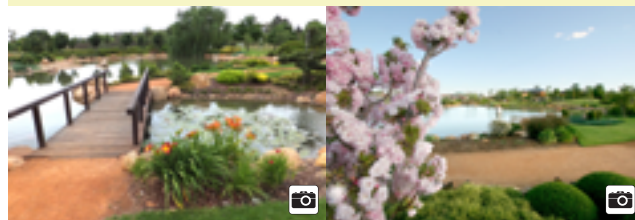
Shoyeon Japanese Garden, Dubbo 8

Beautifully landscaped and maintained Japanese gardens, co-located with Dubbo Regional Botanic Garden, Biodiversity Garden and new Sensory Garden.

Location: Coronation Drive, Dubbo (near Orana Mall), just off the Mitchell Highway to Wellington.

Hours: Open every day 9am–4pm except Christmas and New Years Day.

T: (02) 68014450 **W:** www.dubbo.com.au



Narromine Aviation Museum 11

A captivating exhibition of artifacts, documents and photographs which tell the story of aviation as it unfolded at one of Australia's most historic aerodromes.

Home of Australia's only flying replica of a Wright Model A Flyer

Location: The museum is located at Narromine Aerodrome on Trangie Road, just two kilometres north-west of town.

Hours: Wednesday–Monday, 10am–5pm.

Visits at other times by arrangement.

Cost: \$7 adult, \$5 child / pensioner \$5 per person for groups of 15 or more.

T: (02) 6889 7131 (Museum), 0407 459 581

Beryl Hartley

W: www.narromineaviationmuseum.org.au



Dundullimal Homestead, Dubbo



Support RiverSmart's Blue Bucket Fund

Donations are tax deductible and go to community projects in your region

Outback Arts, Coonamble



Servicing the region since 1999, Outback Arts Inc has a long history with local communities standing as the regional arts development organisation for the Far West including the shire of Coonamble, Cobar, Bourke, Walgett and Warren.

Outback Arts works with community and arts organisations such as Arts Councils, Historical Societies, School P&C's, Indigenous organisations and many more in providing and promoting arts and cultural opportunities within their communities.

Projects that Outback Arts have run include Indigenous fibre weaving workshops, touring theatrical performances and art touring exhibitions across the five shires and many more.

Outback Arts also facilitates an art gallery within their office in Coonamble. The gallery is open to the public and available for applications for shows to be held throughout the year.

Location: 65-67 Castlereagh St, Coonamble NSW

Hours: Monday to Friday 9am-5pm

T: 02 6822 2484

M: 0419 629 818

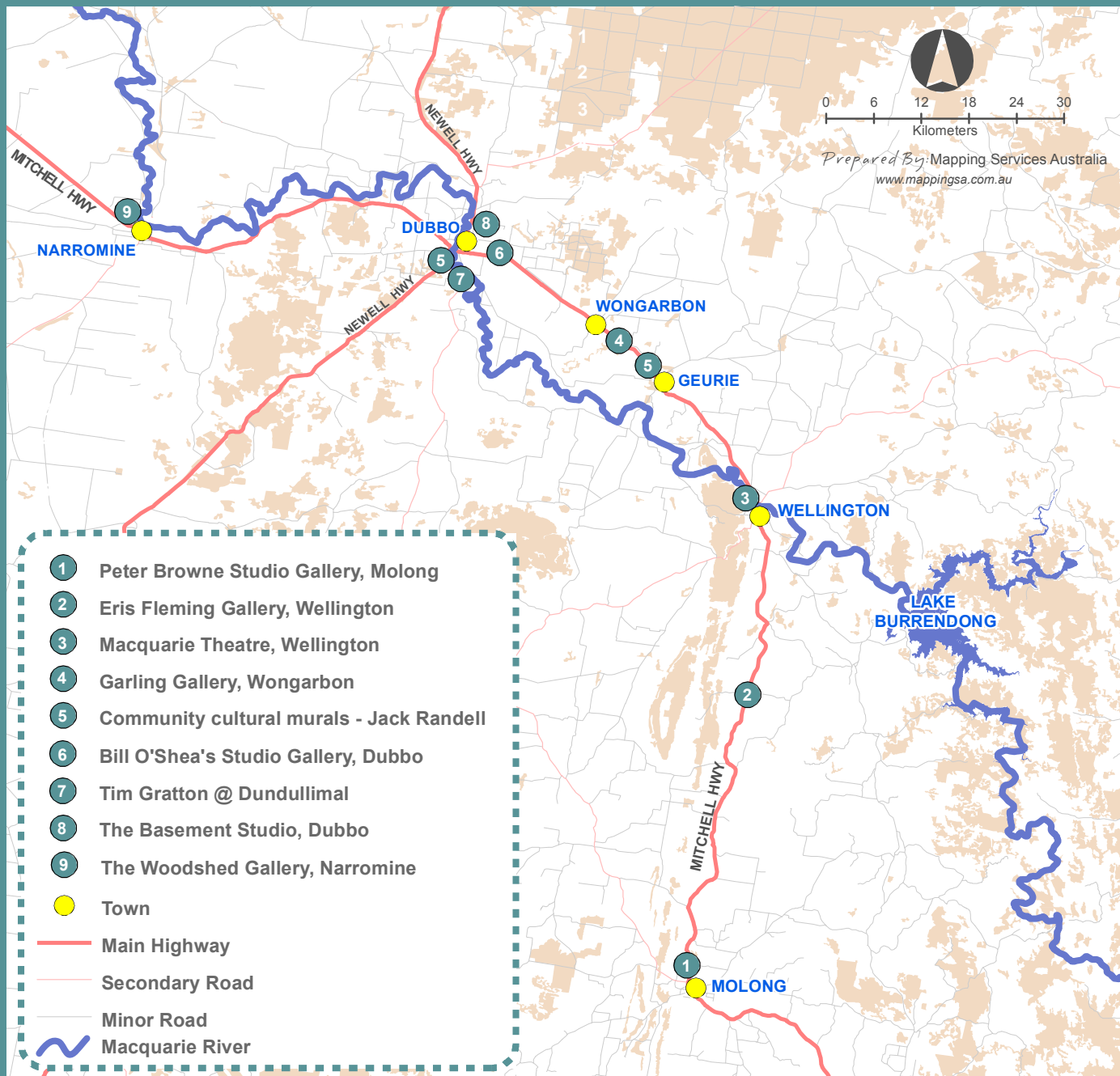
W: www.outbackarts.com.au



OUTBACK ARTS
building creative communities

ART TRAIL

Map reference number	Attraction	page
	Art Trail Map <i>See also town inset maps on pages 72-79</i>	27
1	Peter Browne Studio Gallery, Molong	28
2	Eris Fleming Gallery, Wellington	28
3	Macquarie Theatre, Wellington	29
4	Garling Gallery, Wongarbron	29
6	Bill O'Shea's Studio Gallery, Dubbo	29
5	Community cultural murals - Jack Randell	30
7	The Basement Studio, Dubbo	30
8	Tim Gratton @ Dundullimal Homestead	31
9	The Woodshed Gallery, Narromine	31



Peter Browne Studio Gallery, Molong 1

Peter's paintings depict farm and rural life from the 1950s to the present day, as he has been painting for forty years. Probably the most unusual factor in his artwork is the fact that he includes almost all facets of daily life, nothing escapes his brush, motorcycles, hot air balloons aircraft, bicycles cars, trucks, machinery, steam engines, emus etc. . .

Location: On the Mitchell Highway through Molong from Orange—Dubbo. Easy to spot . . . opposite the BP Service Station.

T: 0424 593 351 (02) 6366 9487

W: www.peterbrowne.com.au



Eris Fleming Gallery, Wellington 2

This Gallery is uniquely situated in the large rambling gardens of a 130 year old farmhouse. It's 4 kms off the Mitchell Highway along a picturesque country lane. The Gallery houses a vibrant, colourful selection of Eris Fleming's oil paintings and bronze sculptures. These works have enduring appeal for both the collector and the investor.

Location: From Wellington travel south 24 kms along the Molong—Orange road. Turn right at Woodside Lane and travel another 4 kms.

Hours: Friday, Saturday, Sunday, Monday 10am—5pm. After hours by appointment.

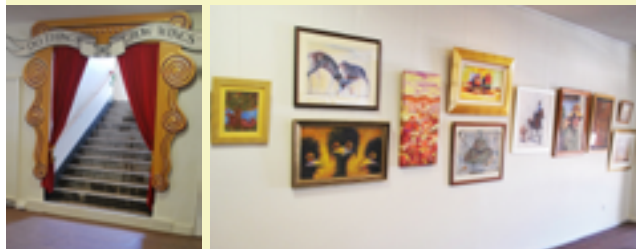
T: (02) 6846 7221

W: www.erisfleming.com.au



Macquarie Theatre, Wellington 3

Right in the heart of Wellington's CBD you'll find the Macquarie Theatre; a place for art, design and cultural exhibitions and events. **Location:** 36–42 Swift St, diagonally opposite and up the hill from the Civic Centre. **Hours:** Vary depending on the calendar of events **T:** 0409 311 893 **E:** macquarietheatre@gmail.com **W:** www.macquarietheatre.com.au or find us on Facebook



Garling Gallery, Wongarbron 4

The fully restored 100 year-old shopfront adds historical charm and warmth to the collection of original oils, water colours, pencil and bronze sculpture. The artists' studio makes an interesting visit with works in progress at various stages of completion. The Gallery collection encourages collectors and investors alike, with clientele taking full advantage of commission free prices.

Location: The Garling Gallery is situated in the rural village of Wongarbron, 15 km east of Dubbo on the Mitchell Highway (which connects Dubbo and Wellington). Follow the signs once you turn off the highway.

Hours: Tuesday—Friday 10am—4pm, Saturday 10am—1pm or by appointment.

T: (02) 6887 8518 or email via

W: www.garlinggallery.com.au



Bill O'Shea's Studio Gallery, Dubbo 6

Experience the wonders of Australia's landscape in all its glorious colours, painted in traditional style, at Bill O'Shea's Studio Gallery. Bill's works dramatically and beautifully typify the Australian scene — the woolsheds, mining and farming scenes, shacks, timber mills, homesteads and pubs of Australia. Bill is a prize winning artist.

Location: 83 Sheraton Rd, Dubbo.

Hours: Open 7 days 8.30am—5.30pm

Free admission

T: (02) 6884 2665 or 0419 467 204

E: billoshea20@hotmail.com



Community cultural murals – Jack Randell 5

Jack Randell's public murals are based on a collaborative process where participants are invited to submit ideas. These are translated into images that are tumbled into the jigsaw design, presented to the community as a digital mock-up and then painted as a workshop. The works are representations of the aspirations, desires and ideas of the community that hosts the project.



Geurie Youth Club Mural was repainted in the summer 2007/8 as a Youth Club members holiday workshop. Project artists Jack Randell, Paul Taylor and Annette Simpson supervised the painting of the exterior

walls of the clubhouse. Geurie is on the Mitchell Highway between Wellington and Dubbo. The Youth Club is on the corner of Mitchell and Jennings Streets.

Biladurang Platypus Mural can be found on the amenities block at the Koala compound of Taronga Western Plains Zoo in Dubbo. This project was designed and supervised by Jack Randell was a collaboration with students at the Lincoln School of the Orana Juvenile Justice Centre and Taronga Western Plains Zoo's Project Platypus.

Contact: www.fishdog.com.au



Tim Gratton @ Dundullimal Homestead 8

As an internationally recognised artist Tim is well known for his cutting-edge work in niche area of art expression – body art. In the late 1980's Tim started body painting whilst living in Amsterdam after studying Fine Art at the Rietveld



Academy. At Dundullimal homestead you will see landscapes, body art photography or you might see some drawings or sculpture. Visit Tim and you can enjoy his company and maybe you might get to take a piece of him home with you...

Location: see below **Hours:** see below

T: 0422 615 945

E: info@timgratton.com

W: www.timgratton.com



The Basement Studio, Dubbo 7

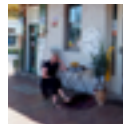
'The Basement Studio' is the artspace and workshop of community arts practitioner Brigid Palin. Brigid offers a range of solutions for

individuals, government departments, and corporate clients, from artists training workshops to management and consultancy on creative projects of any scale. The Basement Studio is a dynamic art space providing a flexible environment suitable for fine art exhibitions, art and craft workshops, or a studio space for groups or project teams. Check website/blog/facebook page for upcoming events. The Basement now also offers a professional archival picture framing service. Open for framing bookings Mondays & Fridays 10am-3pm or by appointment.

Location: 39-41 Macquarie Street, Dubbo **Hours:** Contact first

T: 0408 231 827 **E:** brigid@basementstudio.com.au

W: www.basementstudio.com.au and also on Facebook



The Woodshed Gallery, Narromine 9 *see page 49 Produce Trail*

WhereistheART.com.au
Covering the creative centre of NSW

WHO

WHEN

WHAT

WHERE

WHY

HOW

...of visual arts across
inland regional NSW

