



Taronga Western Plains Zoo, Dubbo

## NATURE TRAIL

Map reference number	Attraction	page
	Nature trail map See also town inset maps on pages 72-79	34
1	Burrendong Botanic Garden and Arboretum	36
6	Taronga Western Plains Zoo, Dubbo	36
3	Mount Arthur Reserve and Lookout, Wellington	37
2	Platypus spotting, Wellington	37
4	Wongarbon Tank Reserve	38
5	Dubbo Regional Botanic Garden	38
7	Rotary Wetland, Narromine	39
8	Argonauts Park-Goan Waterhole, Trangie	39
9	Tiger Bay Wetland, Warren	39
10	Macquarie Marsh Nature Reserves	40
11	Wetland viewing platform, Macquarie Marshes	41
12	Willie Retreat, Macquarie Marshes	41
13	Scenic helicopter rides over the Macquarie Marshes	41



## Burrendong Botanic Garden and Arboretum ①

Here you will find a collection of native plants from all over Australia and, particularly, a stunning collection of the unusual and striking Western Australian flora – much of which is not usually seen in the east. The Arboretum is, virtually, a living museum.

**Location:** The Arboretum is co-located with Lake Burrendong State Park and the Burrendong Sport and Recreation Centre, only one hour's drive from either Dubbo or Orange and five hours from Sydney. If you are coming from the north of the state, the park is 27km south-east of Wellington.

**Hours:** Open every day except Christmas day.

**T:** (02) 6846 7454 **E:** [curator@burrendongarboretum.org](mailto:curator@burrendongarboretum.org)

**W:** [www.burrendongarboretum.org](http://www.burrendongarboretum.org)



## Taronga Western Plains Zoo, Dubbo ⑥

Taronga Western Plains Zoo is home to over 700 animals in three sq km of bushland. As you explore the Zoo you'll find yourself surrounded by magnificent wildlife in wide open plains. Whether you walk or ride around the zoo circuit on hired bikes or carts, it's a fun way to spend time with family and friends, away from it all. The Zoo offers a range of daily activities including a full schedule of keeper talks and feeds, tours and animal encounters. The Savannah Visitor Plaza free access area includes zoo ticketing and information, shop, award winning Safari Playground, jumping castle, free BBQs and picnic

grounds. Visitors can also enjoy fresh food and amazing views at Bakhita' Café. The Savannah Visitor Plaza overlooks the stunning Savannah Lake and Primate Islands, home to Ring-tailed Lemurs and Spider Monkeys.

**Location:** Obley Road, Dubbo – just off the Newell Highway to Parkes.

**Hours:** 9am–4pm daily. Last entry to the Zoo circuit 4pm daily.

**T:** (02) 6881 1400

**E:** [wpz@zoo.nsw.gov.au](mailto:wpz@zoo.nsw.gov.au)

**W:** [www.taronga.org.au/taronga-western-plains-zoo](http://www.taronga.org.au/taronga-western-plains-zoo)



## Mount Arthur Reserve and Lookout, Wellington ③

First sighted by the explorer John Oxley in 1817, the Reserve offers several walking trails of various durations plus a lookout to gaze down across the town, its two rivers (the Bell and Macquarie) and valley. There's a bar-b-que, a shelter and toilets. No camping is allowed and caravans are not recommended as the road is quite steep and narrow in places. **Location:** If coming from Dubbo go straight through the first round-about and then turn right at the second round-about, cross the Bell River and then proceed for approximately two



kms and you'll see the sign to the Reserve on your right. If coming from Molong turn left at the first round-about and then go straight ahead at the second one.

**W:** [www.visitwellington.com.au](http://www.visitwellington.com.au) or go to the Visitor Information Centre.

## Platypus spotting, Wellington ②

Right in the heart of Wellington there are several places with blue 'Platypus country' signs marking locations where you might just see one of these elusive creatures.

**Where to look:** One spot is along the Bell River behind the parklands where you will also find the Visitors Information Centre in the centre of town. There's a suspension bridge for walkers. Further downstream, the Bell River joins the Macquarie at John Oxley Park (where there is also a boat ramp). This is another spot where platypus have been seen. Upstream, if you stay at either the Bridge Motel or Riverside Caravan Park (see River bedz) right on the river, you may see platypus there also. Remember, the best times for platypus spotting are around dawn and dusk and you'll need to sit quietly.



## Wongarbon Tank Reserve 4

This is a 30 hectare reserve on the edge of the township of Wongarbon which includes a path for walking through an area of grasslands and woodlands. There is also a large dam. The area offers good bird watching and in the spring, wildflowers. No camping allowed. There are no facilities.



**Location:** Wongarbon is on the Mitchell highway between Dubbo and Wellington.

**Hours:** Not applicable – no booking necessary.

**W:** [www.dubbo.com.au](http://www.dubbo.com.au)

## Dubbo Regional Botanic Garden 5

A regional Botanic Garden co-located with the Shoyoen Japanese Garden, the Biodiversity Garden, the new Sensory Garden.

**Location:** Coronation Drive, Dubbo (near Orana Mall), just off the Mitchell Highway to Wellington.

**Hours:** Open every day 9am–4pm except Christmas and New Years Day.

**W:** [www.dubbo.com.au](http://www.dubbo.com.au)



## COURT HOUSE HOTEL NARROMINE--02 68891015



John & Sharon Myott  
23 Barraway Street  
Narramine NSW 2871

Relax in the friendly bar or beer garden and brag about the fish you just caught in the nearby Macquarie River!

## Rotary Wetland, Narromine 7

Walking trails around the wetland – great bird watching and picnic facilities.

**Location:** On the edge of Narromine township – follow Dandaloo Street to the Tullamore Road. Look for the signs.

**How to make a booking:** Not necessary



## Argonauts Park-Goan Waterhole, Trangie 8

This is a quiet and peaceful rest stop beside a classic Australian waterhole with big old Red gums. There are picnic tables, toilets, kids play ground, bar-b-ques etc. Camping is not allowed. Access is sealed. There are garbage bins.



**Location:** Driving from Warren the Park is on your left just after you cross the railways lines on the road to Narromine. From Narromine it's just after you cross the bridge coming into town on a sweeping right hand bend.

**Hours:** Not applicable

## Tiger Bay Wetland, Warren 9

Several walking trails and a bird hide – great bird watching. Picnic tables and off-road parking.

**Location:** On the edge of Warren township – take the Oxley Highway toward Gilgandra. Wetlands are found on both sides of the road. Look for the signs.

**How to make a booking:** Not necessary



## Macquarie Marsh Nature Reserves 10

The Macquarie Marshes Nature Reserve and State Conservation Area are managed by the NSW National Parks and Wildlife Service. The nature reserve is separated into two areas, the north and south marsh.

The summer of 2010–11 saw the largest flood in the Macquarie Marshes for 10 years and resulted in the best waterbird breeding event for 10 years with more than 70,000 Ibis and 40,000 Egrets, Cormorants, Darter, and Night herons successfully breeding in the marshes.

The Macquarie Marshes are a dynamic system, experiencing wet and dry cycles, each equally interesting in their own way.

There are a number of ways you can experience the Macquarie Marshes.

A simple drive along Gibson's Way is a good way to start and for many people provides a good introduction to the Macquarie Marshes. There is an Observation Platform along Gibson Way near the Terrigal Creek (see page 31).

The Macquarie Marshes Nature Reserve is surrounded by private land and as such, is not generally accessible to the public. However, a NPWS Discovery Weekend is held once a year where NPWS staff and local NPWS Discovery Rangers take members of the public on guided walks and tours. This is usually held on the Labour Day long weekend in October of each year and is subject to weather conditions. NPWS Discovery walks and tours can also be organised at other times of the year.

**Location:** From Warren, take the road to Carinda. The Southern Nature Reserve is about 80–85 kilometres along this road. The Northern Nature Reserve is further along the road to Carinda. See map on our website.

**T:** (02) 6825 4364 at the Warrumbungle National Park Visitor Centre



## Support RiverSmart's Blue Bucket Fund

Donations are tax deductible and go to community projects in your region

## Wetland viewing platform, Macquarie Marshes 11

This elevated viewing platform is a great place to see birdlife when there is water in the wetlands. Check before you go as in this region wetlands aren't always wet – this isn't Kakadu! **Location:** The viewing platform is on Gibson's Way, the road that links the Carinda Road (near Willie Retreat – see under River bedz) and Quambone. If travelling from Warren, take the road to Carinda for just over 100kms and turn right at the Telstra tower into Gibson's Way. Note – Gibson's Way is unsealed and not suitable for other than 4WD after rains. It is strongly recommended you get local advice before proceeding to the viewing



platform as when there is water in the Macquarie marshes there are several places it crosses this road and may make it impassable even if you have 4WD. The black floodplain soils are easy to get bogged in!

**Hours:** Not applicable.



## Willie Retreat, Macquarie Marshes 12 see page 67 River Bedz



## Scenic helicopter rides over the Macquarie Marshes 13

Contact Nyngan Riverside Tourist Park – see page 67 River Bedz

## Community supporters of Macquarie River Trails: Dubbo Field Naturalists and Conservation Society

This society fosters interest, knowledge and enjoyment in natural history and conservation with field trips, social meetings, campouts, and other special events.

**W:** [www.dubbofieldnats.org.au](http://www.dubbofieldnats.org.au)





If you're short of time and can't get to the Macquarie Marshes then the Tiger Bay Wetlands on the edge of Warren are a must see. Complete with a bird hide, walking trails and picnic tables – and just a few minutes walk from the heart of town.



The Macquarie River has many scenic spots, like this at Sir Roden Cutler Park in Dubbo. Morning mist shrouding the river is common in the cooler months. See River trail page 11.



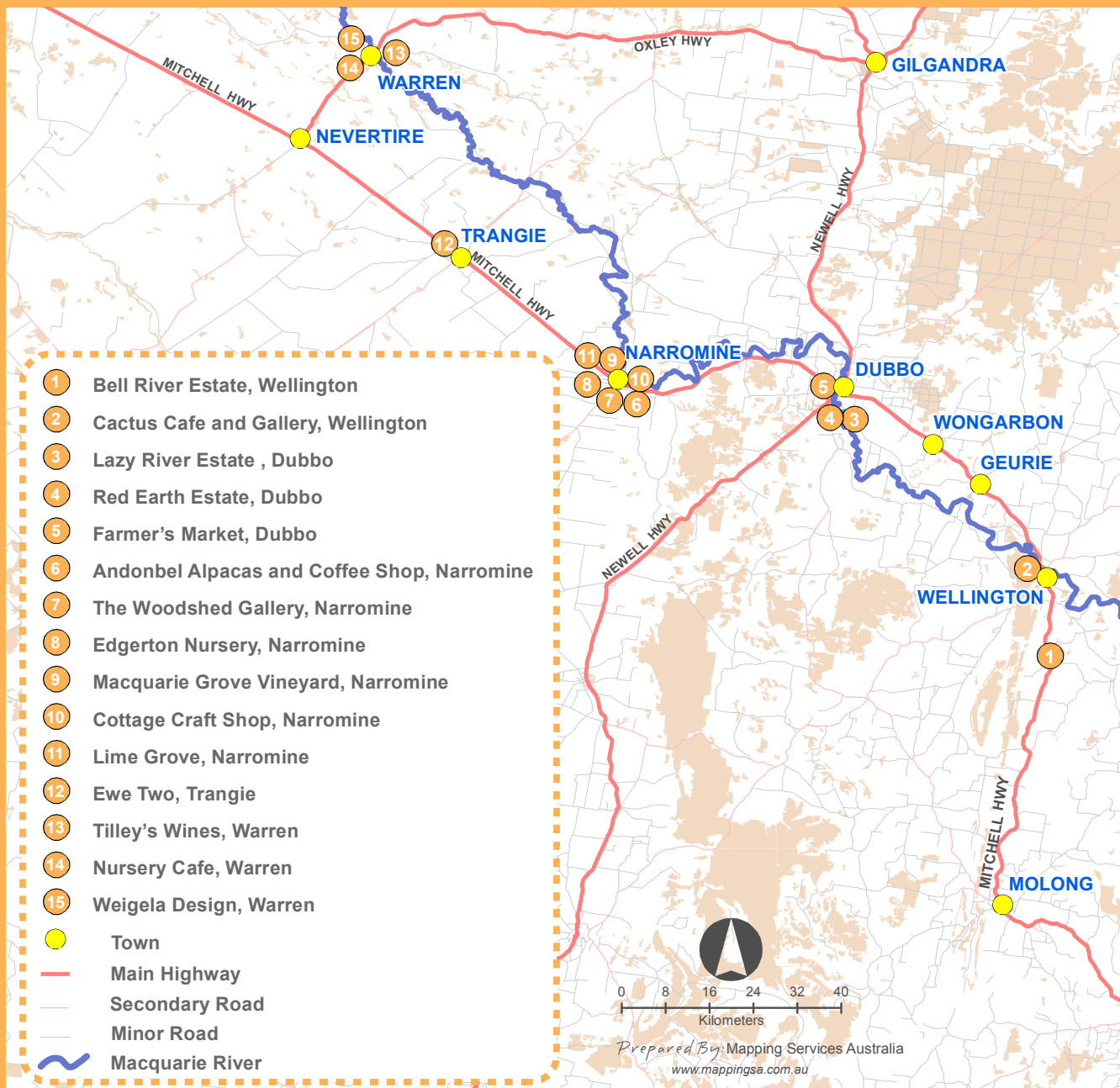
Tilley's Wines in Warren – by appointment only but worth the effort. See Produce trail page 50.



Welcome to the Cod capital – get yourself a copy of the **Fishing Trail Guide**, a companion to this one.

## PRODUCE TRAIL

Map reference number	Attraction	page
	Produce Trail Map See also town inset maps on pages 72–79	44
1	Bell River Estate, Wellington	46
2	Cactus Café and Gallery, Wellington	46
5	Farmer's Market, Dubbo	46
3	Lazy River Estate, Dubbo	47
11	Lime Grove, Narromine	47
4	Red Earth Estate, Dubbo	48
9	Macquarie Grove Vineyards, Narromine	48
8	Edgerton Nursery, Narromine	48
6	Andonbel Alpacas and Coffee Shop, Narromine	49
10	Narromine Cottage Craft Shop	49
7	The Woodshed Gallery, Narromine	49
12	Ewe Two on Dandaloo, Trangie	50
13	Tilley's Wines, Warren	50
14	Nursery Café, Warren	51
15	Weigela Design, Warren	51





## Bell River Estate, Wellington 1

Wine tasting and sales in beautiful surroundings and just 200 metres from the Bell River.

**Location:** 17 kms from Wellington on the Molong—Orange Road.

**Hours:** Monday—Saturday 9am—6pm, Sunday 10am—6pm  
**T:** (02) 6846 7277

**E:** sales@bellriverestate.com.au

**W:** www.bellriverestate.com.au



## Cactus Café and Gallery, Wellington 2

Fantastic coffee!! Clothing, gifts and homewares, regional produce, functions and parties. The menu is varied, using fresh and where possible local ingredients. Take-away food is also available. The Café are also licensed and has a selection of regional wines. Enjoy the surrounds of this heritage building, beautifully maintained and now revitalised into a Mexican hacienda.



**Location:** 33—35 Warne Street. Follow the signs off the highway through town . . . we're just a stone's throw away.

**Hours:** Tuesday—Saturday 10am—5pm  
**T:** (02) 6845 4647

**W:** www.cactuscafe.com.au

## Farmer's Market, Dubbo 5

The Farmer's Markets offer a range of seasonal fresh produce, fresh fruit and vegetables, herbs and plants. There is also fresh bread, a selection of local pork, beef and lamb, award winning olive oils, preserves, jams, marinates honey, wine, nuts and so much more. The markets regularly attract around 2,000 people with some 60 stallholders.

**Location:** At the Macquarie Lions Park, behind the Visitor Information Centre on the corner of the Newell Highway and Macquarie Street, Dubbo.

**When:** 1st and 3rd Saturday of every month from 8am—noon.

**T:** 0488 685 006 **E:** enquiries@dubbofarmersmarket.org.au

**W:** www.dubbofarmersmarket.org.au



## Lazy River Estate, Dubbo 3

Café, events, functions, workshops, wine and relaxation by the Macquarie River on our Hippó Beach.

**Location:** 29R Old Dubbo Road, Dubbo NSW 2830. Approximately 3–4 kilometres from the turn into Old Dubbo Road near the main highway bridge.

**Hours:** Café hours Friday—Sunday 10am—4pm

**T:** (02) 6882 2111 **E:** events@lazyriverestate.com.au

**W:** www.lazyriverestate.com.au



## Lime Grove, Narromine 11

Lime Grove is Australia's largest lime orchard of 10,000 trees. No pesticides or insecticides are used at Lime Grove, so every piece of fruit is ready to eat right off the trees. Lime Grove manufactures a number of fabulous products such as Lime Juice Cordial, Lime Infused Oil, Lime Zest Honey . . . and more, all available at the Café/Restaurant. A great place to relax and watch as the chooks and geese go about their days in the wide open paddocks and café garden, while enjoying the best food west of the Blue Mountains.

**Location:** Half an hour from Dubbo, through Narromine, 5kms along the Trangie Road. Signs welcome you to Lime Grove.

**Hours:** Lime Grove Café/restaurant is open Wednesday through Sunday. Bus tours welcome by arrangement.

**T:** (02) 6889 1962 **E:** scollett@limegrove.net.au

**W:** www.limegrove.net.au



## Red Earth Estate, Dubbo 4

Chat with the winemaker while enjoying a wine tasting and cheese platter. Red Earth Estate is a member of Macquarie Valley Food and Wine Inc.



**Location:** Drive along Obley Road past the entrance to Taronga Western Plains Zoo and Dundullimal Homestead and turn right into Camp Road. We are on the left at 18 Camp Road.

**Hours:** 11am–5pm every day except Wednesday.

**T:** (02) 6885 6676

**W:** [www.redeartheestate.com.au](http://www.redeartheestate.com.au)

## Macquarie Grove Vineyards, Narromine 9

Taste wine varieties from around the world grown beside the Macquarie River. Macquarie Grove Vineyards is a member of Macquarie Valley Food and Wine Inc.

**Location:** Eumungerie Road, Narromine.

Follow the signs to Gilgandra from Narromine. Macquarie Grove is less than a kilometre from the turn-off near the golf course just after you cross the Macquarie River.

**Hours:** By appointment only.

**T:** (02) 6889 2111 or 0427 253 165

**W:** [www.transplants.com.au](http://www.transplants.com.au)



## Edgerton Nursery, Narromine 8

Voted the Best Small Garden Centre NSW/ACT 2011 & 2012 and Accredited 'Garden Centre of Excellence'. Edgerton Nursery is a complete garden centre specialising in plants suited to the

harsh western NSW climate. Also featuring beautiful garden decor items, gifts and home-ware, garden furniture, pots and ornaments.

**Location:** Right on the main street of Narromine, just up from the United Services Memorial Club.

**Hours:** 7 days. Monday–Friday 9am–5pm. Saturday–Sunday 9am–4pm

**T:** (02) 6889 1187 **E:** [anna@edgertonnursery.com.au](mailto:anna@edgertonnursery.com.au)

**W:** [www.edgertonnursery.com.au](http://www.edgertonnursery.com.au) and also on Facebook



## Andonbel Alpacas and Coffee Shop, Narromine 6

A wonderful place to enjoy the peaceful surrounds and sounds of alpacas and the tranquility of nature. There is also the fantastic coffee shop in an old train carriage plus shearing exhibitions, produce for sale and talks on the alpacas.

**Location:** "Nyrang" Dappo Rd, Narromine NSW (Off the Parkes Road and 2 minutes past the Showground). **Hours:** Open for bookings: Monday and



Tuesday (10am–4pm).

Open: Wednesday to

Saturday (9am–4pm).

Sunday – all day breakfast special included.

**T:** (02) 6889 1135 and also on Facebook.

## Narromine Cottage Craft Shop 10

Narromine Cottage Craft is a craft emporium selling high quality crafts, cooking, gifts and home-ware that are locally made or sourced. All goods are handmade in the local area by local residents, who form part of a co-operative with the aim of supporting local charities in the area while giving

members the opportunity to express their creative talents.

**Location:** 61 Dandaloo Street – the main street of Narromine – on the opposite side to Coles, the Services Club and Edgerton Nursery.

**Hours:** Monday–Friday 9.30am–5pm, Saturday: 9am–12.30pm, Sunday: 9am–12.30pm **T:** (02) 6889 4330



## The Woodshed Gallery, Narromine 7

A gallery of local art, produce and crafts, giftware, antique furniture as well as a range of timber furniture made from recycled timbers.

**Location:** 17 Burraway Street, Narromine (on the highway from–to Dubbo) – opposite the famous Glenn McGrath statue.

**Hours:** Monday–Saturday 10am–6pm

**T:** 0428 853 436 or

0427 897 929

**W:** [www.woodshedgallery.com.au](http://www.woodshedgallery.com.au)



## Ewe Two on Dandaloo, Trangie 12

Ewe Two on Dandaloo is never one to follow the crowd and this ensures the products available in the store are unique. This fantastic little emporium sells quality women's clothing as well as new lines of homewares. Ewe Two has become a drop-in centre for locals and a must-see destination for travellers and tourists. As well as fashion and homewares, Ewe Two also stocks up on local produce.



**Location:** On the sweeping bend of the Mitchell highway through Trangie.

**Hours:** Monday–Friday 9am–5pm, Sat 9am–1pm, Sun 11am–4pm.

You can also shop online.

**T:** (02) 6888 8268

**E:** [contact@ewetwo.com.au](mailto:contact@ewetwo.com.au)

**F:** find us on Facebook

## Tilley's Wines, Warren 13

Wine tastings and vineyards by the river. Tilley's Wines is a member of the Macquarie Valley Food and Wine Inc.

**Location:** Less than a kilometre out of Warren on the Ellengerah Road.

**Hours:** By appointment only.

**T:** 0407 474 509

**E:** [charlestilley@bigpond.com](mailto:charlestilley@bigpond.com)



# one one s.e.v.e.n Bakery Cafe

117 Dubbo Street, Warren  
02 6847 4189

OPEN: 5.30am to 5pm Weekdays  
6am to 2pm Saturdays and alternate Sundays



## Nursery Café, Warren 14

Come in for a cuppa! Offering a café plus a nursery with a wide range of indoor and outdoor shrubs, seedlings and plants, all in one. The Nursery Café can also cater for functions.

**Hours:** Monday to Saturday 7am–5pm and open every second Sunday.

**Location:** 137 Dubbo Street, Warren

**T:** (02) 6847 4539

**E:** [suzannemayger@hotmail.com](mailto:suzannemayger@hotmail.com)

## Weigela Design, Warren 15

Regular treasure hunting trips ensure that Weigela Design is always bursting with a vibrant range of unusual and unexpected boutique-style gifts. Customers stepping into Weigela are enticed by the beautifully perfumed candles and soaps. Weigela Design is a store that takes an entire day to explore – with fashions to peruse and a large outdoor area to explore.



**Location:** 121 Dubbo Street, Warren. Right in the heart of the main street.

**Hours:** 9am–5.30pm  
Monday to Friday, 9am–late Saturday

**T:** 02 6847 3726

**W:** Find us on Facebook!



Farmer's Market, Dubbo



## PLEASE SUPPORT THE WORK OF RIVERSMART

**Riversmart Australia** is a not-for-profit organisation with the vision of “**Managing rivers for people, wildlife and sustainability**”. What that means is we fund-raise, from a range of sources, to make things like this **Macquarie River Trail Guide** happen.

We started along the Macquarie River in 2008 with the goal of getting people to ‘turn and face the river’ – that is, get out and enjoy it, but also be prepared to help look after it – to be a caretaker of sorts. Now we have our finger in many pies from schools education, to landcare type restoration works in collaboration with those who have the privilege of living on the river or get out and enjoy it, scientific surveys so we know where the problems are and all sorts of community events.



*When travelling through the region don't miss the statue of Australian cricket legend Glenn McGrath in his home town of Narromine.*



**Macquarie River Trails**, under which this Guide fits, is another of our initiatives, undertaken in partnership with the local councils and more than 50 local businesses and organisations that run attractions and activities along the river and its corridor.

How can you help? Simple really. . . we need financial support to keep doing what we do, so please consider a donation to our (tax deductible) **Blue Bucket Fund**.

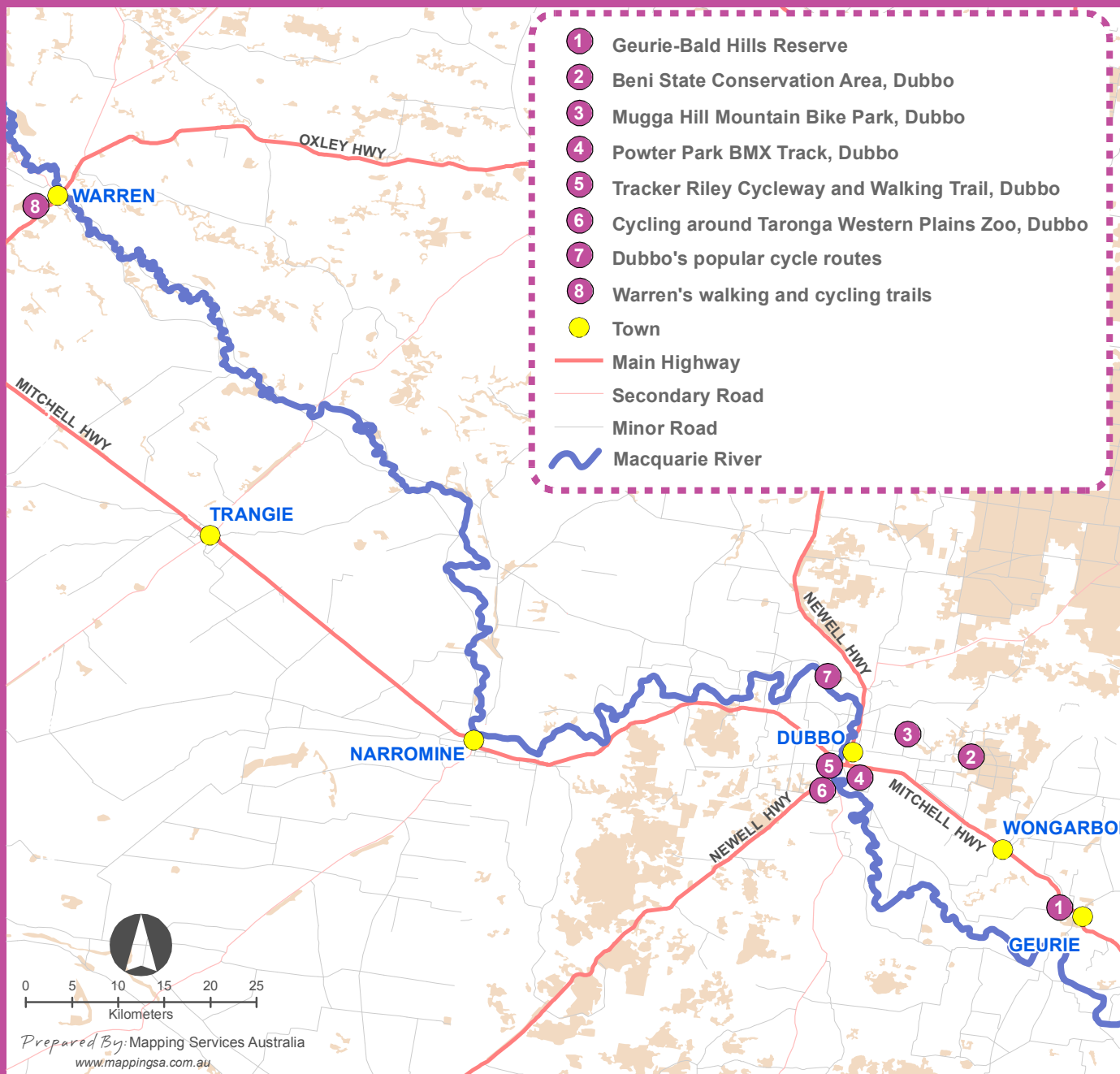
In case you missed it, blue buckets are our trademark. Why? We chose them because every household, school, business and farm in this country has buckets. And what do they use them for – moving water around. . . We hope that every time you use a bucket (blue or otherwise) you'll think about how much water you really need, and if it's not clean, what's the best way to dispose of it so it doesn't end up in a nearby river.

If you'd like to know more about our work visit [www.riversmart.org.au](http://www.riversmart.org.au) or send an email to [bill.phillips@riversmart.org.au](mailto:bill.phillips@riversmart.org.au)

We hope you'll get behind this exciting initiative.

## CYCLE TRAIL

Map reference number	Attraction	page
	Cycle Trail Map See also town inset maps on pages 72-79	54
1	Geurie-Bald Hill Mountain Bike Trails	56
2	Beni State Conservation Area cycling, Dubbo	56
4	Powter Park BMX Track, Dubbo	57
3	Mugga Hill Mountain Bike Park, Dubbo	57
5	Tracker Riley Cycleway and Walking Trail, Dubbo	57
6	Cycling around Taronga Western Plains Zoo, Dubbo	58
7	Dubbo's popular cycle routes	58
8	Warren's cycling and walking tracks	58





### Geurie-Bald Hill Mountain Bike Trails 1

Here you'll find 15 kms of dedicated cross country mountain biking trails – all marked, single track through Central West native woodlands.

**Location:** The south end of Chambers Street, Geurie (between Wellington and Dubbo) – follow the signs.

**Hours:** All day and night – no bookings necessary.

**W:** [www.dubbocitycycleclub.com.au](http://www.dubbocitycycleclub.com.au) – then follow MTB link

### Beni State Conservation Area cycling, Dubbo 2

Cross country mountain biking on managed trails – 45km of double track through Central West native woodlands. A single track is proposed to link specific areas.

**Location:** Eastern end of Whitewood Road (Myall Street in Dubbo).

**Hours:** All day and night – no bookings necessary.

**W:** [www.dubbocitycycleclub.com.au](http://www.dubbocitycycleclub.com.au) – then follow MTB link



### Powter Park BMX Track, Dubbo 4

BMX race track with regular racing.

**Location:** Corner of Gipps and Myall Streets, Dubbo

**Hours:** All day and night – no booking necessary.



### Mugga Hill Mountain Bike Park, Dubbo 3

Cross country mountain biking trails, a pump track and dirt jumps.

**Location:** Just out of Dubbo on the south side of the Golden Highway to Dunedoo.

**Hours:** All day and night – no bookings necessary.

**W:** [www.dubbocitycycleclub.com.au](http://www.dubbocitycycleclub.com.au) – then follow MTB link

### Tracker Riley Cycle and Walking Trail, Dubbo 5

Cycling and walking trail which forms river-based loops, a 13km urban loop from Serisier Bridge to the Tamworth Street footbridge and return, and a longer loop from the Tamworth Street footbridge past the Taronga Western Plains Zoo to Dundullimal Reserve, crossing the river again there to return to Tamworth Street via Macquarie Street. Provides great access to swimming and fishing locations.

**Location:** Car park at the end of Tamworth street is a great place to start in either direction, as is the car park below West Dubbo Bowling Club, opposite Abel Tasman Motor Inn and beside the BIG4 Dubbo Parklands. There is also car parking at Dundullimal Reserve.

**W:** [www.dubbo.nsw.gov.au](http://www.dubbo.nsw.gov.au)



## Cycling around Taronga Western Plains Zoo **6**

see Taronga Western Plains Zoo, Nature Trail page 28



## Dubbo's popular cycle routes **7**

When in Dubbo get your hands on the great fold-out map and guide showing several bike routes in and around Dubbo, plus a street map. Then – get active! Available from the Visitor Information Centre in Dubbo.



## Warren's cycling and walking tracks **8**

Warren has three cycling and walking tracks – all of which will let you see other attractions as well. But, this is 'plains country', so don't expect too many hills!

**Locations:** One track starts at the Tiger Bay wetland – the Beemunnel trail – and it runs for about 4 kms, out and back. The second – the Rotary Centennial trail – runs out to the Warren Weir Reserve on the upstream side of town. It's about 10 kms out and back. The third – the Laurie Elder Walk – runs out of town past the Golf Club to the level crossing on Oxley Highway. All three give you a safe and leisurely way to see some of the countryside and are great for the joggers too.



## Wheeler's Cycles – Dubbo and Bathurst

Retail sales of bicycles, parts and accessories, bike fittings and full workshop repairs and service. We carry all major bike brands.

Hours: 9am–5.30pm weekdays & 9am–1pm Saturday

**Darrell Wheeler Cycles**  
104 Talbragar Street, Dubbo  
T: 02 6882 9899

**Wheeler Cycles Bathurst**  
65 George Street, Bathurst  
T: 02 6331 9661

E: [admin@wheelercycles.com.au](mailto:admin@wheelercycles.com.au)



## Community supporters of Macquarie River Trails

### Dubbo Mountain Bike Club

This club helps promote and develop mountain biking in the Dubbo, Geurie, Wellington area. The club hosts races, social rides and skills days and is an active partner with land managers in the development and maintenance of high quality shared use singletrack trails through the area.

**Contact:** Find us on Facebook, Dubbo MTB.



While visiting Wellington Caves you'll also get to enjoy the nearby Osawano Japanese Gardens. See *Heritage Trail* page 20



Argonauts Park-Goan waterhole, Trangie – a great place to stop for a cuppa, toilet stop and to relax by this wonderful billabong. See *Nature trail* page 39

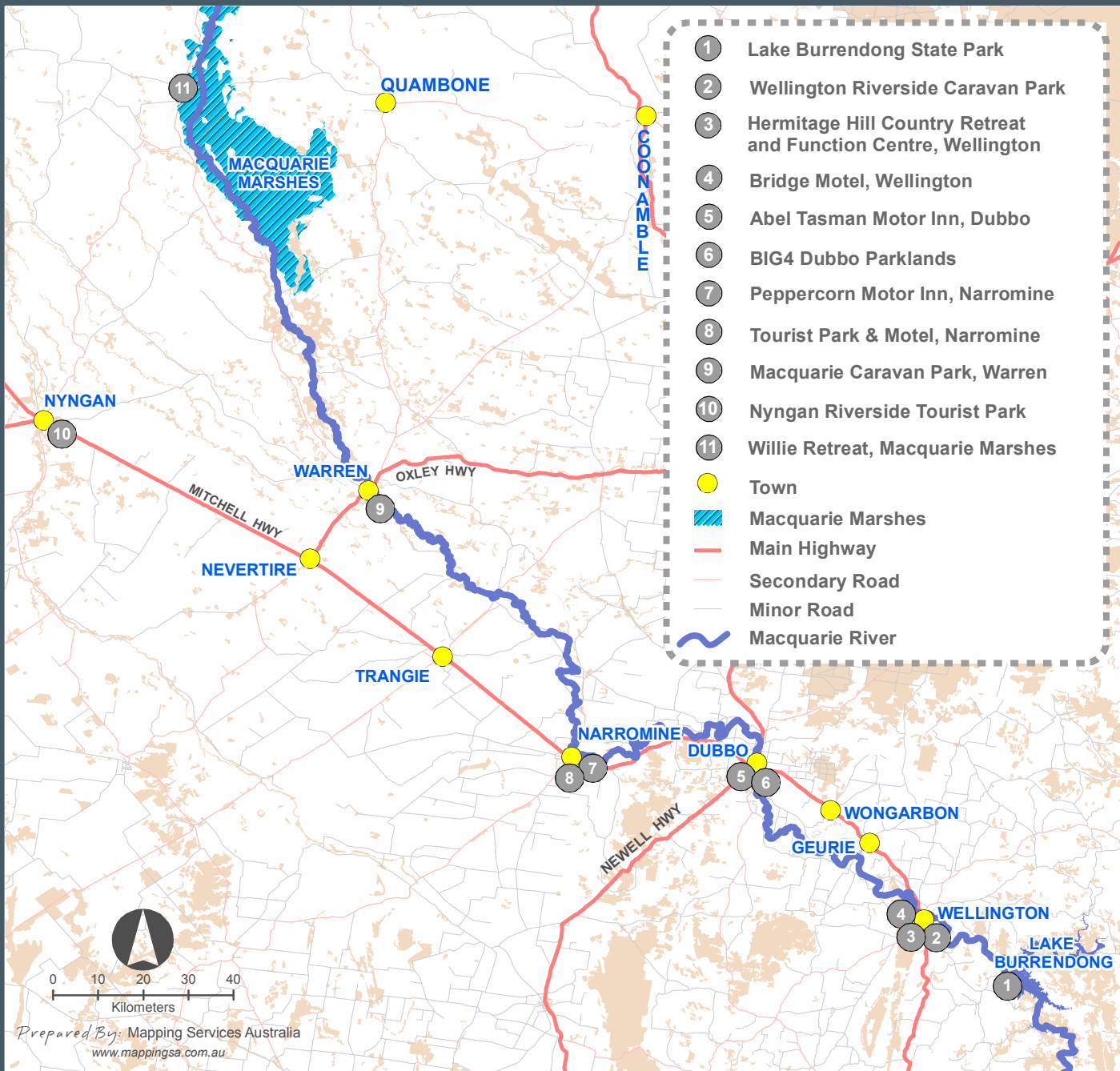


Don't miss the chance while in Dubbo to drop in on prize-winning artist Bill O'Shea. See *Art Trail* page 29

## RIVER BEDZ

Map reference number	Attraction	page
	River Bedz Map See also town inset maps on pages 72-79	62
1	Lake Burrendong State Park	64
2	Wellington Riverside Caravan Park	64
3	Hermitage Hill Country Retreat and Function Centre, Wellington	64
5	Abel Tasman Motor Inn, Dubbo	65
6	BIG4 Dubbo Parklands	65
4	Bridge Motel, Wellington	66
7	Peppercorn Motor Inn, Narromine	66
8	Tourist Park & Motel, Narromine	66
9	Macquarie Caravan Park, Warren	67
10	Nyngan Riverside Tourist Park	67
11	Willie Retreat, Macquarie Marshes	67







## Lake Burrendong State Park ①

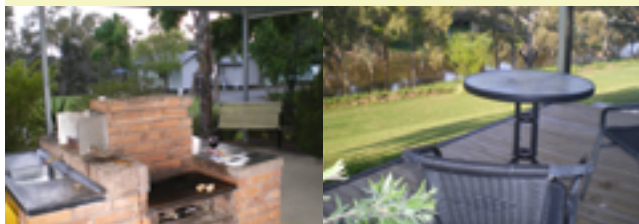
see page 8 River Trail

## Wellington Riverside Caravan Park ②

This well maintained, 3-star-rated camping and van park offers on-site cabins, caravan and camping sites with direct access to the Macquarie river for fishing, canoeing etc. Platypus watching is another attraction near here.

**Location:** On the Mitchell Highway, next to the bridge over the Macquarie River on the Dubbo side of Wellington.

**Reservations:** (02) 6845 1370



## Hermitage Hill Country Retreat and Function Centre, Wellington ③

Hermitage Hill Resort sits looking majestically over the historic township of Wellington. It's the transformed former hospital built in 1904. Today it

offers accommodation, a superb restaurant and conference, workshop and wedding reception facilities.

**Location:** 135 Maxwell Street, Wellington

**Reservations:** (02) 6845 4469

**E:** info@hermitagehill.com.au



## Abel Tasman Motor Inn, Dubbo ⑤

The Macquarie river and the Tracker Riley Cycle and Walking Trail are almost on the doorstep of this comfortable and modern 4-star motor inn. Taronga Western Plains Zoo is about 2 kilometres away. There are two clubs/pubs within easy walking distance.

**Location:** 133 Whylandra St (Newell Highway to Parkes) Dubbo NSW 2830

**Reservations:** Toll free 1800 209 992 or via website

**E:** contact@abeltasman.net.au

**W:** www.abeltasman.net.au



## BIG4 Dubbo Parklands ⑥

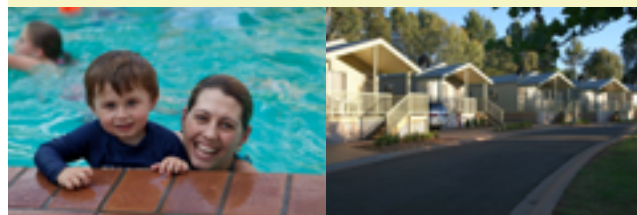
4 ½ star-rated camping and van park only a few hundred metres from the Macquarie river. BIG4 Dubbo Parklands has holiday cabins, caravans, on-site cabins, camping, BBQ's, toddler playground, movies, swimming pool, Jumbo jumping pillow, table tennis, Internet and lots more, including the nearby Macquarie river.

**Location:** Follow the signs for the Newell Highway to Parkes — and Taronga Western Plains Zoo.

**T:** (02) 6884 8633

**Reservations:** On-line or toll free 1800 033 072

**W:** www.big4dubboparklands.com.au



## Bridge Motel, Wellington 4

This 3-star river-front motel has all ground floor, air conditioned units, a pool, beautiful shaded lawns to relax, go fishing, or launch a canoe. This is also a good place to start the Macquarie River canoe and kayak trail (see separate description). Platypus watching is another attraction at this location.



**Location:** On the Mitchell Highway, next to the bridge over the Macquarie River at 5 Lee Street.  
**Reservations:** (02) 6845 2555  
**E:** bookings@bridgemotelwellington.com.au

## Peppercorn Motor Inn, Narromine 7

Three star-rated motor inn with great location. The Peppercorn Motor Inn has 21 units and is just fifty metres from the Narromine Golf Course and Club with its Chinese Restaurant. It's also less than 200 metres from the Macquarie River.

**Location:** Corner of Trangie Road—Mitchell Highway and Warren Road  
**Reservations:** (02) 6889 1399 **W:** www.peppercornmotorinn.com.au



## Tourist Park & Motel, Narromine 8

This facility offers both classic powered and unpowered caravan and tent sites plus a motel. The motel has a large self-catering kitchen, dining room and TV-lounge room. Located within the Narromine aerodrome precinct.



**Location:** Narromine Aerodrome on the Mitchell Highway, Narromine. Take the road to Nyngan and look for the aerodrome entrance on the edge of town.  
**Reservations:** (02) 6889 2129  
**E:** mail@narrominetouristpark.com  
**W:** www.narrominetouristpark.com.au

## Macquarie Caravan Park, Warren 9

This 3 ½ star-rated caravan park has powered and unpowered sites plus ensuite cabins. It's within easy walking distance to the Tiger Bay Wetland (a bird watchers haven) and the Macquarie river.



**Location:** 1 km north east of the Post Office, off the Oxley Highway.  
**Reservations:** (02) 6847 4706  
**E:** macquarievanpark@bigpond.com  
**W:** www.macquarievanpark.com

## Nyngan Riverside Tourist Park 10

Nyngan Riverside Tourist Park is uniquely located on the Bogan River, an easy walk to town, a haven for skiers, anglers, birdwatchers and people just looking for a relaxing time on the banks of the river!

The Park is 3 ½ star-rated and has Deluxe cabins as well as caravan and camping sites and a waterfront function room. The park is also pet friendly.



**Location:** Barrier Highway, Nyngan  
**Reservations:** (02) 6832 1729  
**E:** info@nynganriverside.com.au  
**W:** www.nynganriverside.com.au  
 Bookings for Macquarie Marshes scenic helicopter flights can also be made here.

## Willie Retreat, Macquarie Marshes 11

Willie Retreat offers a range of accommodation options – camping, on-site vans, powered and unpowered van sites, and the Retreat, which is the old shearers' quarters. It is also in the heart of Macquarie marsh wetlands – when they have water. Check first to avoid disappointment.

**Location:** From Warren, take the road to Carinda for just over 100kms and turn right at the Telstra tower into Gibson's Way and Willie Retreat is about 2kms further on. And, see the map available on the website.



**Reservations:** (02) 6824 4361  
**E:** willie.retreat@bigpond.com.au. There is no after hours access, and after rain access may be difficult, so be certain to book ahead. **W:** www.willieretreatmacquariemarshes.com.au or www.riversmart.org.au/WillieRetreat/WillieRetreati.htm

### River trail

Lake Burrendong Sport and Recreation Centre	32°42'27.48"S, 149° 6'53.98"E
Mookerawa Waters State Park, Lake Burrendong	32°46'13.24"S, 149° 8'55.11"E
Adventure Watersports	32°41'17.87"S, 149° 6'30.67"E
John Oxley Park, Wellington	32°32'34.62"S, 148°55'59.35"E
Cameron and Pioneer Parks, Wellington	32°33'11.13"S, 148°56'27.74"E
Macquarie river canoe and kayak trail	not applicable
Sir Roden Cutler Park, Dubbo	32°15'18.70"S, 148°35'17.96"E
Riverbank Park, Dubbo	32°14'46.83"S, 148°35'58.25"E
Lions Park West, Dubbo	32°14'57.20"S, 148°35'41.61"E
Langley's River Cruises, Dubbo	32°14'48.08"S, 148°35'56.58"E
Sandy Beach, Dubbo	32°15'23.41"S, 148°35'26.32"E
Terrungamine Reserve, Dubbo	32°10'7.82"S, 148°35'6.10"E
Macquarie river scenic drive	31°54'57.18"S, 148° 4'57.06"E
Rotary Riverside Park, Narromine	32°13'36.27"S, 148°14'47.99"E
Sandy Creek Rest Area, Warren	31°44'55.73"S, 147°47'1.29"E
Bob Christenson Reserve, Warren	31°41'6.20"S, 147°50'9.30"E
Lions and Macquarie Parks, Warren	
Lions Park:	31°42'11.61"S, 147°50'21.51"E
Macquarie Park:	31°41'53.16"S, 147°50'19.38"E
Victoria, Oxley and more river parks, Warren	
Victoria Park and Oval:	31°41'43.93"S, 147°50'16.91"E
Oxley Park:	31°41'49.16"S, 147°50'23.57"E
Ebert Park:	31°41'58.49"S, 147°50'22.64"E
Orchard Street Park:	31°42'2.05"S, 147°50'32.55"E

### Heritage trail

Caves Bottle House, Wellington Caves	32°37'13.32"S, 148°56'20.47"E
Wellington Caves, Phosphate Mine and Osawano Japanese Gardens	32°37'15.58"S, 148°56'17.47"E
Hermitage Hill Country Retreat and Function Centre, Wellington	<i>see River Bedz</i>
Lion of Waterloo historic country pub, Wellington	32°32'26.08"S, 148°55'50.49"E
Oxley Museum, Wellington	32°33'4.81"S, 148°56'33.99"E
Dundullimal Homestead, Dubbo	32°17'10.46"S, 148°36'10.31"E
Pioneer cemetery, Dubbo	32°18'7.23"S, 148°37'30.85"S
Western Plains Cultural Centre, Dubbo	32°14'59.93"S, 148°36'35.08"E

Old Dubbo Gaol	32°14'45.36"S, 148°36'6.82"E
Shoyeon Japanese Garden, Dubbo	32°15'14.07"S, 148°38'3.08"E
Narromine Aviation Museum	32°13'22.00"S, 148°13'44.85"E

### Art trail

Peter Browne Studio Gallery, Molong	33° 5'23.38"S, 148°52'9.27"E
Eris Fleming Gallery, Wellington	32°45'30.21"S, 148°55'41.44"E
Macquarie Theatre, Wellington	32°33'4.81"S, 148°56'33.99"E
Garling Gallery, Wongarbron	32°20'4.70"S, 148°45'35.62"E
Bill O'Shea's Studio Gallery, Dubbo	32°15'23.44"S, 148°38'47.84"E
Community cultural murals – Jack Randell	32°16'20.04"S, 148°35'10.78"E 32°24'0.52"S, 148°49'49.01"E
The Basement Studio, Dubbo	32°14'43.11"S, 148°36'5.11"E
Tim Gratton @ Dundullimal Homestead	32°17'10.46"S, 148°36'10.31"E
The Woodshed Gallery, Narromine	<i>see Produce Trail</i>

### Nature trail

Burrendong Botanic Garden and Arboretum	32°41'17.87"S, 149° 6'30.67"E
Taronga Western Plains Zoo, Dubbo	32°16'20.04"S, 148°35'10.78"E
Mount Arthur Reserve and Lookout, Wellington	For the entrance 32°33'11.04"S, 148°54'58.41"E
Platypus spotting, Wellington	<i>see Cameron and Pioneer Parks</i>
Wongarbron Tank Reserve	32° 19'48.24"S, 148°46'1.25"E
Dubbo Regional Botanic Garden	32°15'11.22"S, 148°38'6.18"E
Rotary Wetland, Narromine	32°14'52.51"S 148°14'10.40"E
Argonauts Park-Goan Waterhole, Trangie	32° 1'53.42"S, 147°59'13.40"E
Tiger Bay Wetland, Warren	31°41'40.73"S, 147°50'33.18"E
Willie Retreat, Macquarie Marshes	<i>see entry under River Bedz</i>
Wetland viewing platform, Macquarie Marshes	approx. 30°52'48.23"S, 147°41'50.47"E
Macquarie Marsh Nature Reserves	
South Macquarie Marsh Nature Reserve:	approx. 30°55'26.77"S, 147°27'32.43"E
North Macquarie Marsh Nature Reserve:	approx. 30°48'53.56"S, 147°30'0.64"E

## Produce trail

Lazy River Estate, Dubbo	32°17'51.14"S, 148°37'41.10"E
Lime Grove, Narromine	32°11'30.84"S, 148°11'23.00"E
Bell River Estate, Wellington	32°41'15.47"S, 148°56'43.12"E
Cactus Café and Gallery, Wellington	32°33'4.55"S, 148°56'31.69"E
Farmer's Market, Dubbo	32°14'36.42"S, 148°36'6.02"E
Red Earth Estate, Dubbo	32°17'36.54"S, 148°35'6.59"E
Macquarie Grove Vineyard, Narromine	32°13'8.53"S, 148°14'30.44"E
Edgerton Nursery, Narromine	32°13'48.17"S, 148°14'22.80"E
Andonbel Alpacas and Coffee Shop, Narromine	32°15'10.59"S, 148°15'51.77"E
Narromine Cottage Craft Shop	32°13'50.71"S, 148°14'24.15"E
The Woodshed Gallery, Narromine	32°13'58.80"S, 148°14'24.29"E
Ewe Two on Dandaloo, Trangie	32°2'0.23"S, 147°59'8.86"E
Tilley's Wines, Warren	approx 31°42'39.61"S, 147°50'42.96"E
Nursery Cafe, Warren	31°42'3.43"S, 147°50'12.07"E
Weigela Design, Warren	31°42'3.54"S, 147°50'12.00"E

## Cycle trail

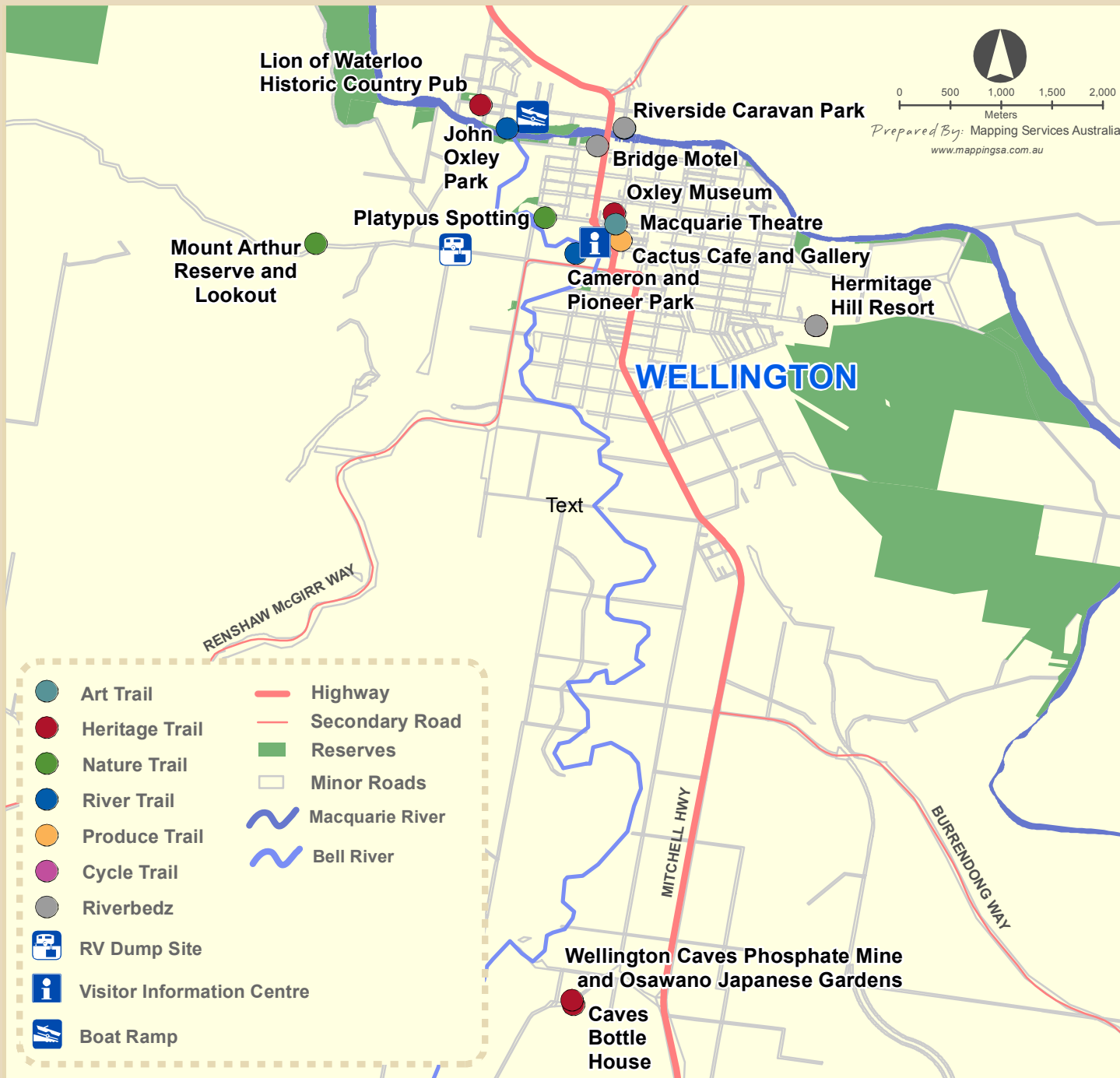
Geurie–Bald Hill Mountain Bike Trails	32°24'0.10"S, 148°49'5.94"E
Beni State Conservation Area cycling, Dubbo	32°14'49.04"S, 148°43'28.70"E
Powter Park BMX Track, Dubbo	32°14'21.53"S, 148°36'43.15"E
Mugga Hill Mountain Bike Park, Dubbo	32°13'30.63"S, 148°39'47.50"E
Tracker Riley Cycleway and Walking Trail, Dubbo	32°15'21.91"S, 148°35'22.94"E
Cycling around Taronga Western Plains Zoo, Dubbo	32°16'20.04"S, 148°35'10.78"E
Dubbo's popular cycle routes	32°10'7.82"S, 148°35'6.10"E
Warren's cycling and walking tracks	
Beemunnel trail:	31°41'37.97"S, 147°50'34.02"E
Rotary Centennial trail:	31°42'24.43"S, 147°50'31.97"E
Laurie Elder trail:	31°42'11.35"S, 147°49'57.37"E

## River Bedz

Abel Tasman Motor Inn, Dubbo	32°15'17.95"S, 148°35'15.36"E
BIG4 Dubbo Parklands	32°15'26.85"S, 148°35'14.69"E
Lake Burrendong State Park	32°41'17.87"S, 149° 6'30.67"E
Wellington Riverside Caravan Park	32°32'32.70"S, 148°56'33.74"E
Hermitage Hill Country Retreat and Function Centre, Wellington	32°33'37.33"S, 148°57'37.79"E
Bridge Motel, Wellington	32°32'39.57"S, 148°56'28.93"E
Peppercorn Motor Inn, Narromine	32°13'31.99"S, 148°14'17.02"E
Tourist Park & Motel, Narromine	32°13'24.59"S, 148°13'47.75"E
Macquarie Caravan Park, Warren	31°40'53"S, 147°51'05"E
Willie Retreat, Macquarie Marshes	30°53'55.31"S, 147°27'56.90"E
Nyngan Riverside Tourist Park	31°33'30.13"S, 147°10'51.56"E

## Photo credits

Page number	Photograph
Cover photos other than main – Heritage (Bill Phillips), Nature (Taronga Western Plains Zoo), River (John Dench), Produce (Bell River Estate), Cycle (NSW National Parks and Wildlife Service), Art (Jenet Stewart, Imajenit)	
page 12	Jen Quealy
page 15	Jenet Stewart, Imajenit
page 20	bottom – courtesy Wellington Council
page 22	courtesy Dubbo City Council – caves photo
page 23	both photos – courtesy Dubbo City Council
page 32	courtesy Taronga Western Plains Zoo
page 36	both – courtesy Taronga Western Plains Zoo
page 39	both – Chris McCulloch
page 40	courtesy NSW National Parks and Wildlife Service
page 41	Dione Carter
page 56	all – courtesy NSW National Parks and Wildlife Service
page 57	courtesy Dubbo City Council middle – courtesy NSW National Parks and Wildlife Service bottom – Lisa Minner
page 58	top – courtesy Taronga Western Plains Zoo bottom – courtesy NSW National Parks and Wildlife Service
page 59	Dubbo Mountain Bike Club – photo courtesy NPWS
All other photos by Bill Phillips or provided by the attractions	





# Narromine







# Macquarie River Trails



Heritage



Nature



River



Produce



Cycle



Art



Fishing



Use this quick code to find our website [www.rivertrails.com.au](http://www.rivertrails.com.au) or you can also follow us on Facebook. Download the app today.

Design: Sprout Design

[www.rivertrails.com.au](http://www.rivertrails.com.au)

## A bird watcher's mecca

The Macquarie river trails region is fast becoming recognised for its amazing variety of bird species – from waterbirds along the rivers and in wetlands, to bush birds in the towns and across the landscape, emus on the run and our birds of prey hovering ready to pounce on a meal.



Sacred kingfisher Photo: Dan Giselsson



Bird  
Watching

Coming in 2013, our next exciting trail . . . birdwatching!

Proudly supported by:

INLAND NSW  
TOURISM

